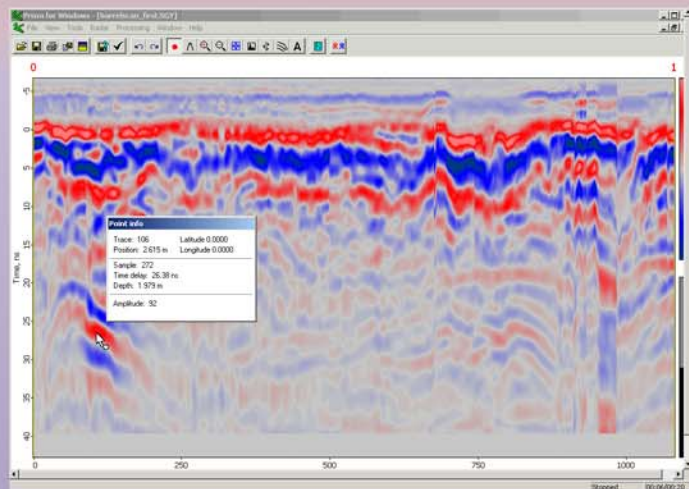


Zond-12C Ground Penetrating Radar



The Zond GPR is a powerful combination of Ground Penetrating Radar and computer software. The Zond is capable of reaching targets with depths of up to 30 meters*! Multiple antennas available.



The Prism software for the Zond-12C can be custom configured to highlight anomalies and show the largest differences for quick and easy target identification. The software also displays depth, distance from startpoint, signal strength, and more!

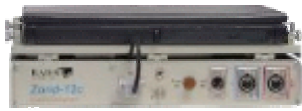


<http://www accuratelocators.com> (541) 855-1590

Accurate Locators Inc.

1383 2nd Ave, Gold Hill, OR 97525 USA

To order call (877) 808-6200 Email: accurate@accuratelocators.com



Zond-12C GPR Available Antennas

Antenna 2.0GHz

- Antenna type: surface, unshielded
- Transmitter output: 100 Volts
- Receiver gain: 10 dB
- Receiver sensitivity⁽¹⁾: 120 mcV
- Resolution⁽²⁾ : 6 cm
- Depth of sounding⁽²⁾ : 2 m

Antenna 1.5GHz, Shielded

- Antenna type: surface, shielded
- Transmitter output: 200 Volts
- Receiver gain: 10 dB
- Receiver sensitivity⁽¹⁾: 120 mcV
- Resolution⁽²⁾ : 10 cm
- Depth of sounding⁽²⁾ : 2 m

Antenna 900MHz, shielded

- Antenna type: surface, shielded
- Transmitter output: 400 Volts
- Receiver gain: 17 dB
- Receiver sensitivity⁽¹⁾: 70 mcV
- Resolution⁽²⁾ : 20 cm
- Depth of sounding⁽²⁾ : 5 m
- Weight: 4 Kg

Antenna 750MHz, shielded, Air-Coupled

- Performance: separated transmitting and receiving
- Antenna type: air-coupled, shielded
- Transmitter output: 200 Volts
- Receiver gain: 10 dB
- Receiver sensitivity⁽¹⁾: 80 mcV
- Resolution⁽²⁾ : 25 cm
- Depth of sounding⁽²⁾ : 3 m

Antenna 500MHz, shielded

Antenna 300MHz, shielded

- Antenna type: surface, shielded
- Transmitter output: 400 Volts
- Receiver gain: 19 dB
- Receiver sensitivity⁽¹⁾: 50 mcV
- Resolution⁽²⁾ : 50 cm
- Depth of sounding⁽²⁾ : 10 m

Antenna 300MHz, shielded

- Antenna type: surface, shielded
- Transmitter output: 400 Volts
- Receiver gain: 20 dB
- Receiver sensitivity⁽¹⁾: 40 mcV
- Resolution⁽²⁾ : 1.0 m
- Depth of sounding⁽²⁾ : 15 m
- Weight: 11 Kg

Antenna 100MHz, Air-Coupled, shielded

- Performance: separated transmitting and receiving
- Antenna type: surface, shielded
- Transmitter output: 400 Volts
- Receiver gain: 10 dB
- Receiver sensitivity⁽¹⁾: 30 mcV
- Resolution⁽²⁾ : 1.0 m
- Depth of sounding⁽²⁾ : 15 m

Antenna 38-75-150 MHz, Air-Coupled, Dipole

- Performance: separated transmitting and receiving
- Antenna type: surface, shielded
- Transmitter output: 400 Volts
- Receiver gain: 10 dB
- Receiver sensitivity⁽¹⁾: 30 mcV
- Resolution⁽²⁾ : 1.0 m
- Depth of sounding⁽²⁾ : 15 m

All prices are in US Dollars. Shipping not included in product prices. Prices include 2 hour demonstration at Accurate Locators INC, and 1 hour technical support. Additional technical support time is available.

(1) -means sensitivity, limited by noise (2) - It is assumed that sounding is made in a soil whose relative dielectric permittivity is equal to 4 and specific attenuation is 1 to 2 dB/m. Depth of investigation is understood to be detection depth of a flat boundary with reflectance equal to 1. Note that these data are rather approximate and are strongly dependent on parameters of the environment sounded.